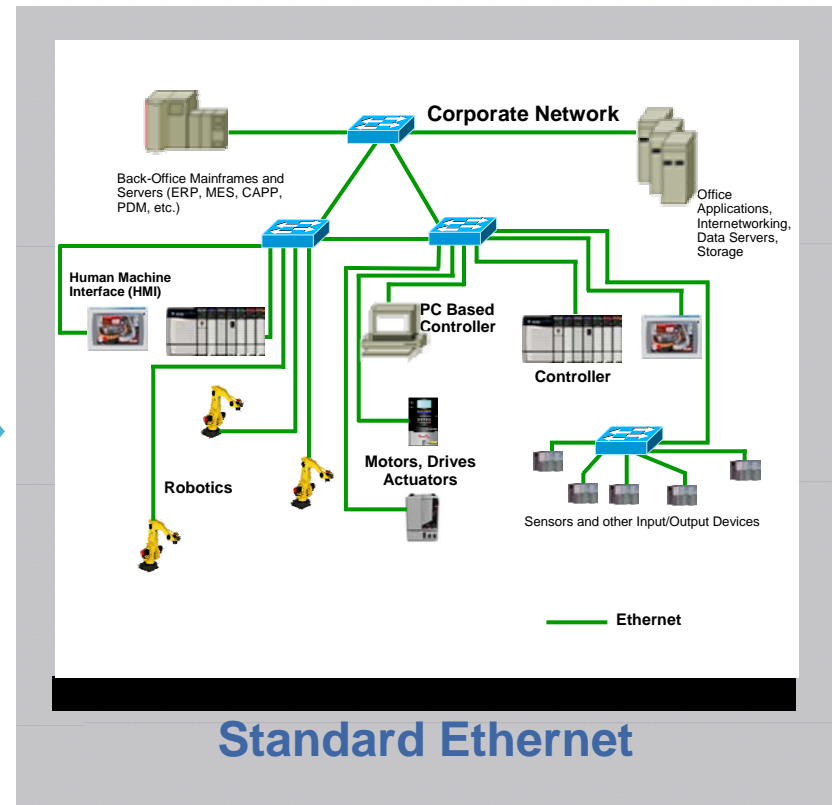
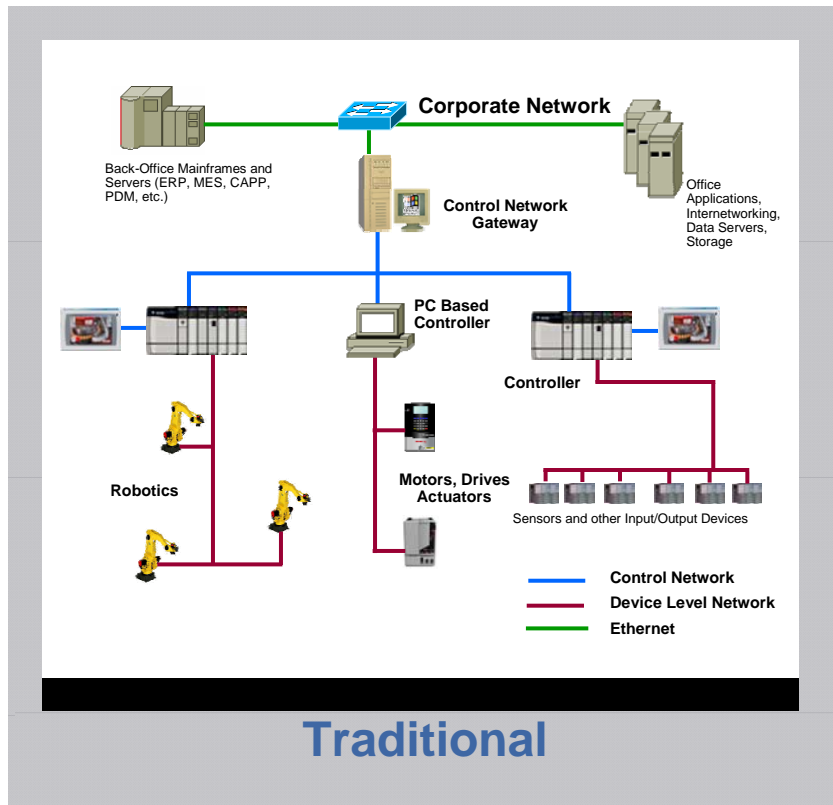

LISTEN.
THINK.
SOLVE.®

Stratix 8000: The Next Generation Ethernet Switch



Manufacturing Network Convergence



Cisco and Rockwell Automation, working together

Common Technology View

Support use of open, unmodified standards, with intelligent networking features in automation networks through ODVA, ISA and others

Collaborating on Reference Architectures

Tested and Validated design and implementation guidance and best practices for a converged network architecture

People and Process Optimization

Develop process guidelines for help with convergence, facilitate training and dialogue with IT and Manufacturing – Educational Series

Joint Product Collaboration

Develop co-branded Industrial Ethernet switches incorporating the best of Cisco and the best of Rockwell Automation

To-Date:

Board members of ODVA
Active in ISA security and wireless committees

Available now

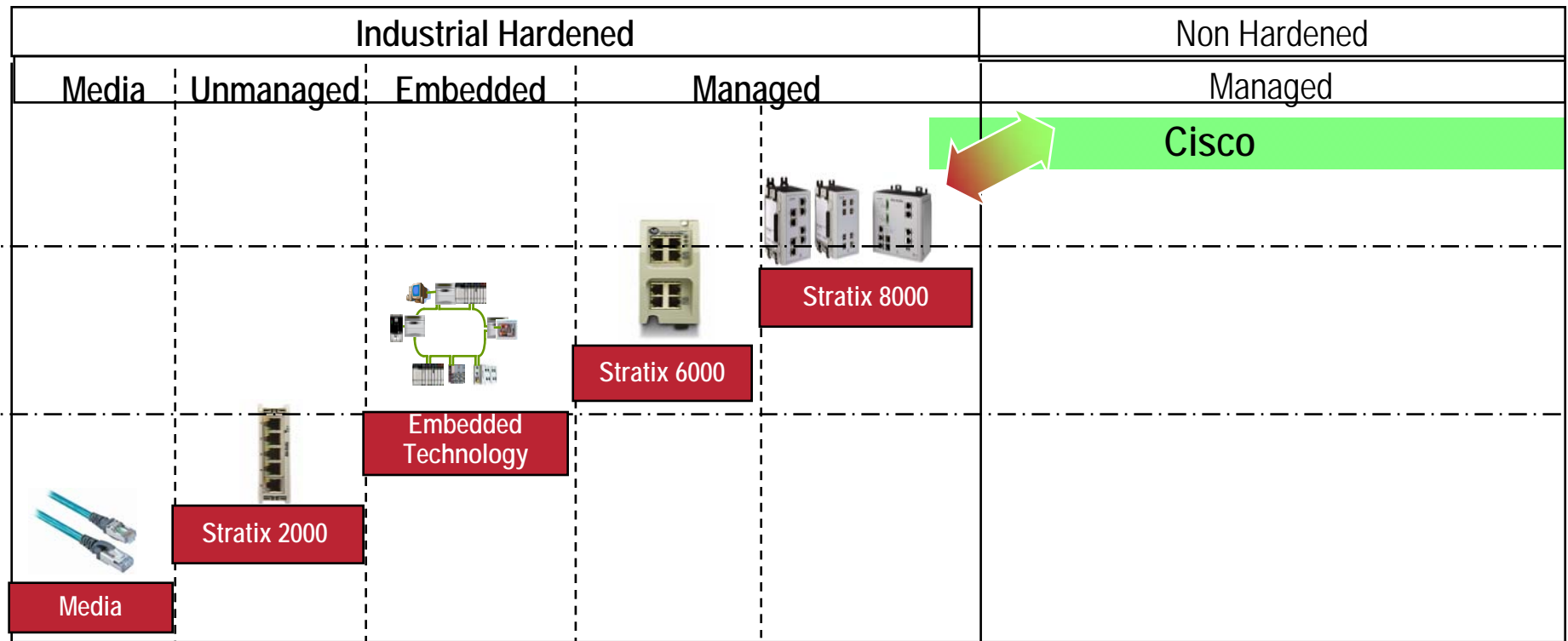
Check out session CC 09
Designing Networks Using Reference Architectures for Robust and Secure Ethernet Design

Joint engagements on 4 continents for 8000+ customers
3 Education Webcasts

Stratix 8000 switches

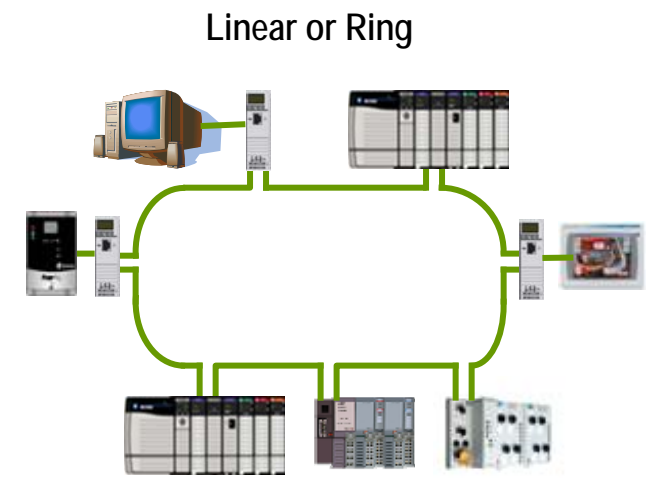
Why Stratix™ From Rockwell Automation

- Convergence of IT and Plant Floor networking facilitates Cisco and Rockwell Automation to collaborate on industry-exclusive switches
- Full portfolio meets the wide variety of applications throughout the industrial infrastructure
- Optimized for ease of deployment using EtherNet/IP throughout the Rockwell Automation Integrated Architecture



Industrial Switch Portfolio

- **8000 - Modular Managed with Cisco Technology**
 - Optimized for the Enterprise and Plant Floor
 - IT Friendly - Cisco operating system, feature set and user interface
 - Engineer Friendly – RSLogix 5000 configuration, Logix tags and FactoryTalk View faceplates
- **6000 - Fixed Managed**
 - Optimized for the Plant Floor
 - Engineer Friendly – RSLogix 5000 configuration, Logix tags and FactoryTalk View faceplates
- **Embedded Technology**
 - Two Ethernet ports embedded in Rockwell Automation and 3rd party products
 - Enables high speed ring and linear topologies
 - Initial Release:
 - ETAP 3-port tap
 - 1756-EN2TR – ControlLogix bridge module
- **2000 - Fixed Unmanaged**
 - Compact size
 - IP20 and IP67 versions
 - No configuration required
- **Physical Media - cables, connectors, cordsets**

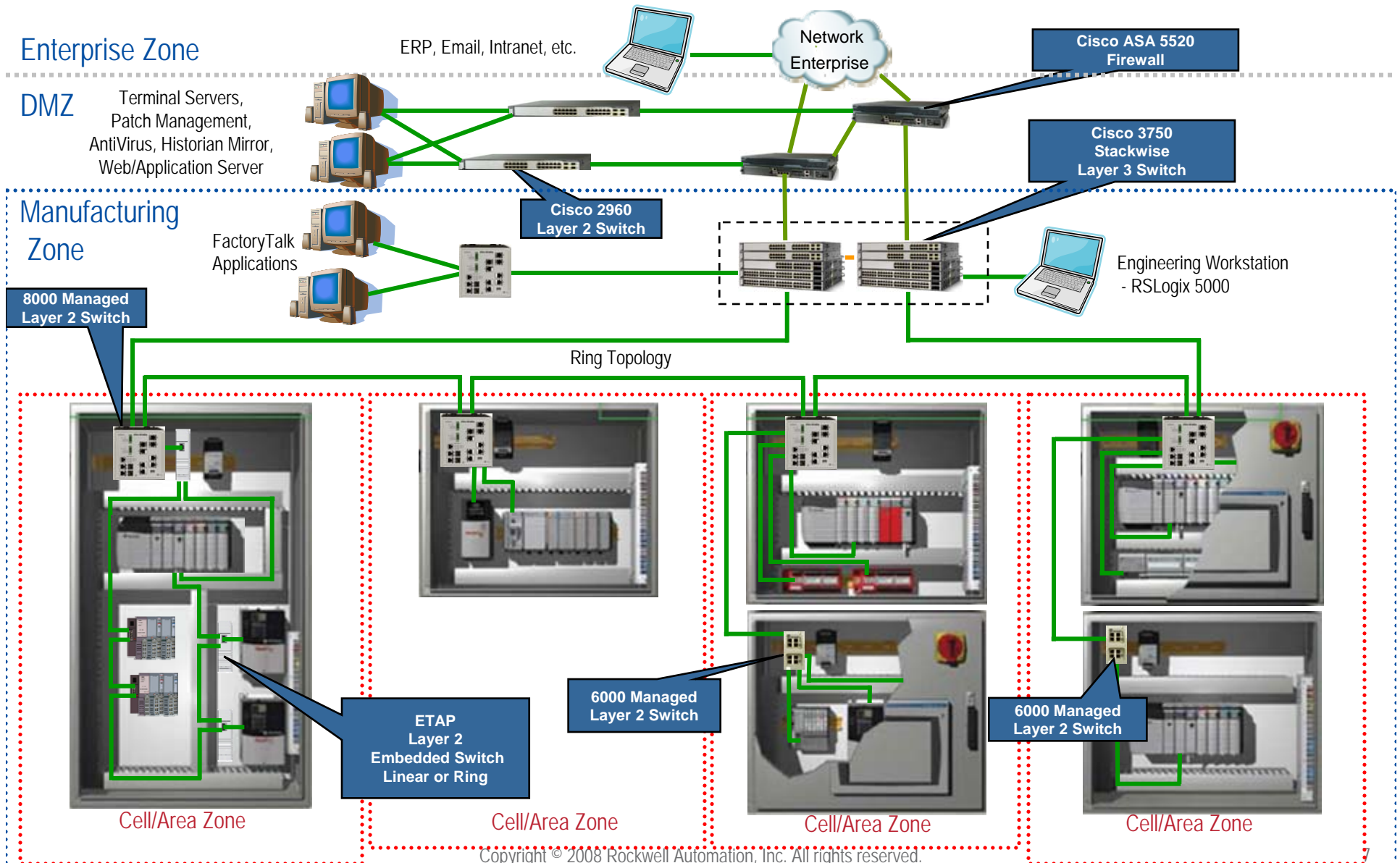


Understanding Your Switch Options

- Industrial versus commercial
- Managed versus unmanaged

	Advantages	Disadvantages
Managed Switches	<ul style="list-style-type: none">• Provide diagnostics data• Provide security options• Provide QoS, VLAN and resiliency support• Ability to manage multicast traffic	<ul style="list-style-type: none">• More expensive• Requires some level of support and configuration to start up and replace
Unmanaged Switches	<ul style="list-style-type: none">• Inexpensive• Simple to set up• Easy to replace	<ul style="list-style-type: none">• No management capabilities• No security• No diagnostic information provided• Difficult to troubleshoot

Representative Configurations



Rockwell Automation Stratix 8000 Managed Switches with Cisco Technology

Best of Cisco

- Secure integration with enterprise network
 - Cisco internetworking operating system (IOS™)
 - Cisco Catalyst™ switch arch. and feature set
 - Familiar tools for IT professionals: command line interface (CLI), CNA and Device Manager



A unique product in the market...
...integrating the enterprise and
manufacturing environments

Best of Rockwell Automation

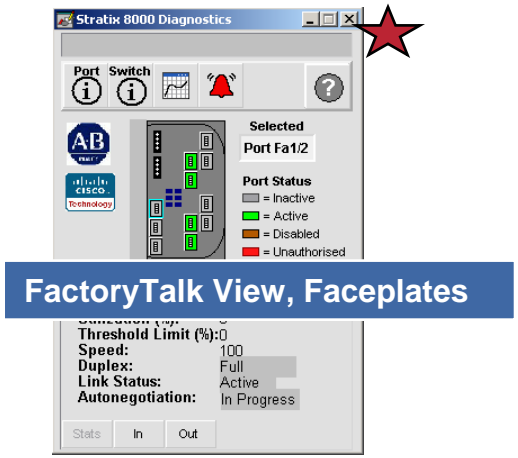
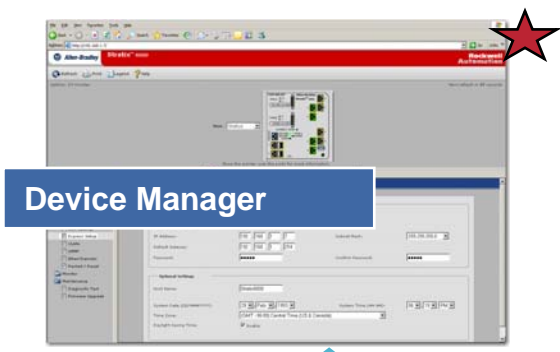


- Premier (CIP) interface to Integrated Architecture
 - RSLogix 5000 for configuration (AOP)
 - Predefined Logic tags for diagnostics
 - FactoryTalk View Faceplates

Best for the Plant Floor Environment

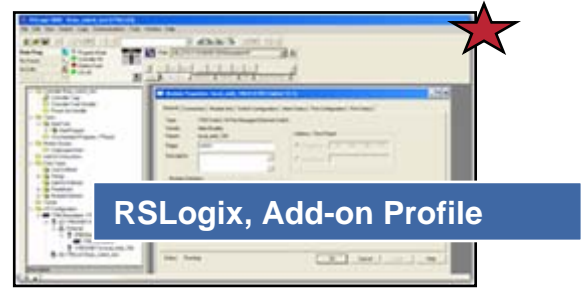
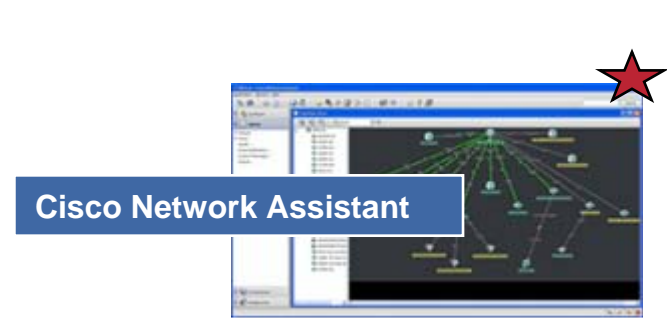
- Easy to Integrate and Maintain
 - Default configurations for Industrial Automation market (Globals and Smartports)
 - Removable Compact Flash for one step device replacement

Stratix 8000 - Common Tools



```
Current configuration : 10758 bytes
!
version 12.2
no service pad
service timestamps debug uptime
service timestamps log uptime
no service password-encryption
!
hostname CZ-C3750-1
!
aaa new-model
aaa authentication login default local
aaa authorization exec default local
aaa authorization network default local
```

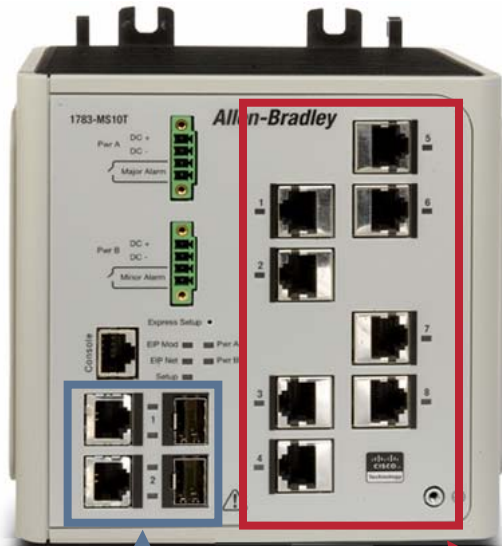
Command Line Interface



 Included in Lab

Stratix 8000 - Modular Design

Base Module
(6-port or 10-port)



Dual Purpose Uplink Ports
10/100/1000 Copper or SFP

Data Ports
10/100 Copper

Extension Module A
(8-port Copper)



8 Extended Data Ports
10/100 Copper

Extension Module B
(8-port Fiber)



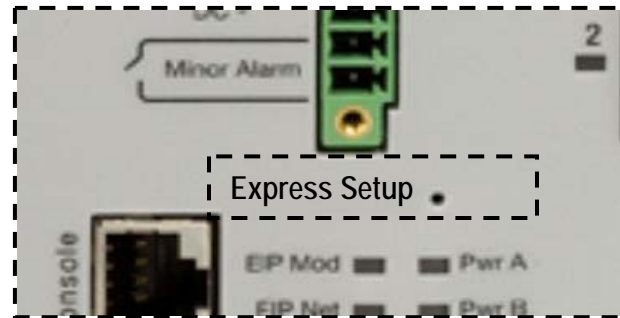
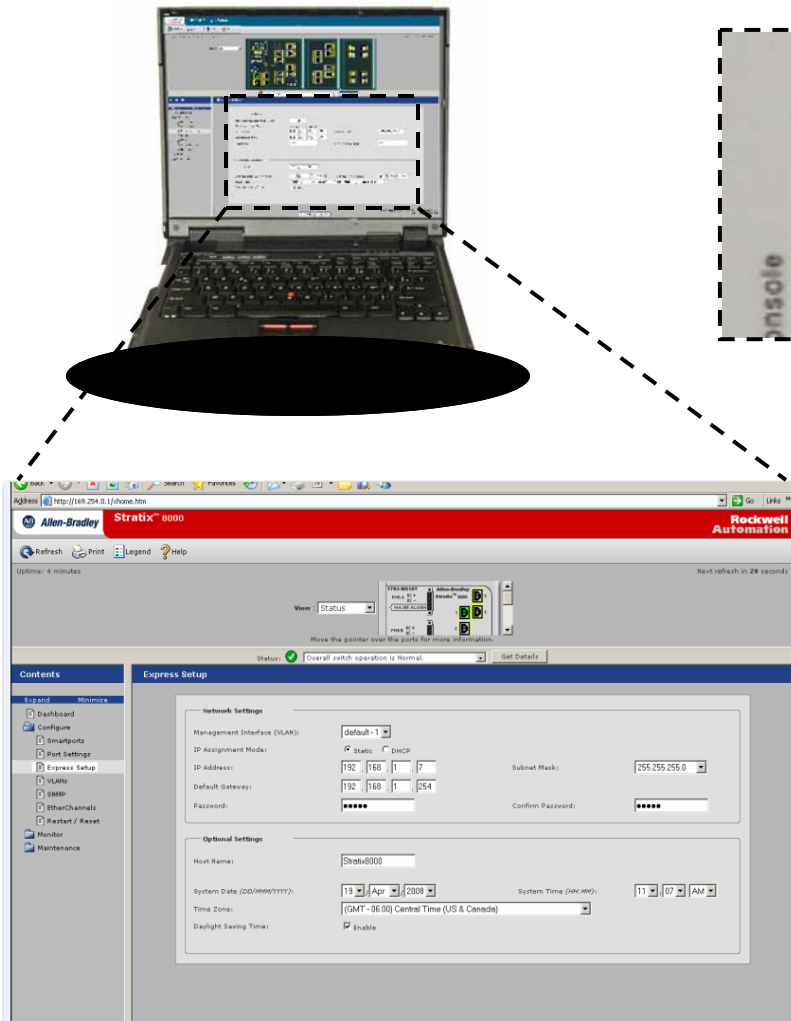
8 Extended Data Ports
100 Fixed Fiber

LISTEN.
THINK.
SOLVE.®

Questions?



Demonstration - Stratix 8000 Express Setup - Initial Switch Setup



1. Power up the Stratix 8000
2. Press *Express Setup* button
3. Wait for port light to blink and connect this port with an Ethernet cable to the PC
4. Open PC browser
5. Assign an IP address and password

LISTEN.
THINK.
SOLVE.®

Thank you for
participating!

